



# Red Fields to Green Fields

*Cleveland, Ohio*

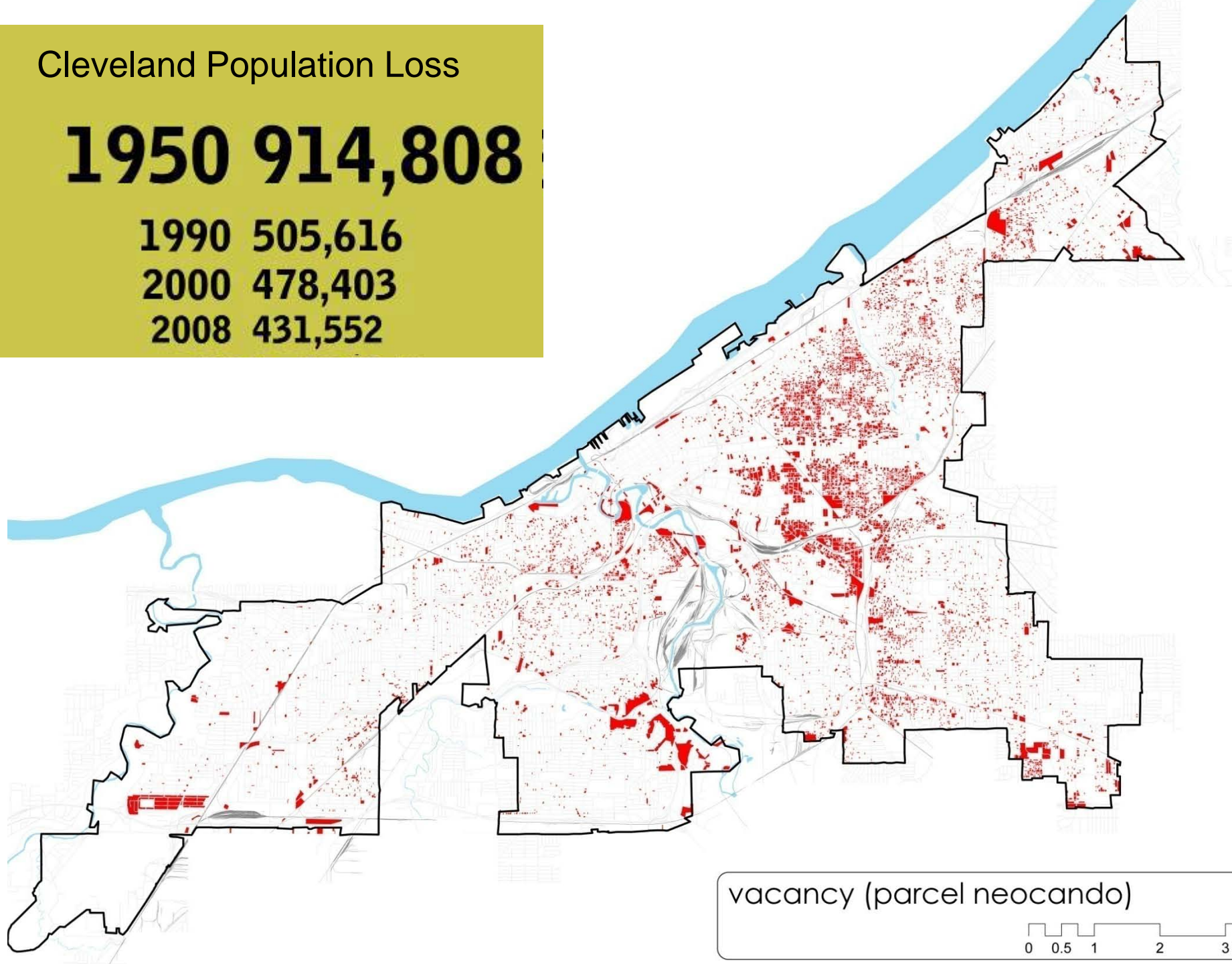
## Cleveland Population Loss

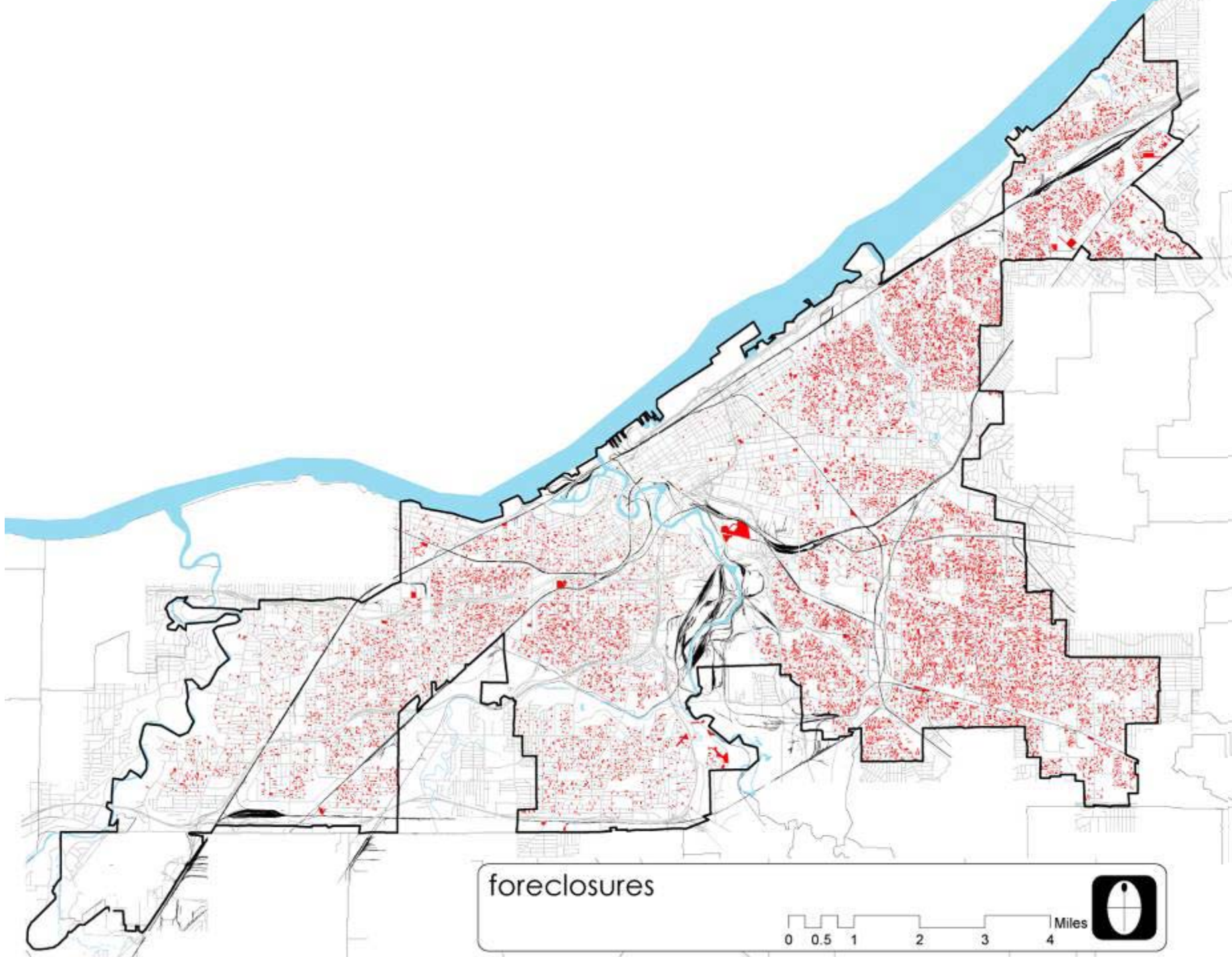
**1950 914,808**

**1990 505,616**

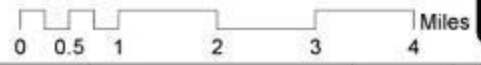
**2000 478,403**

**2008 431,552**





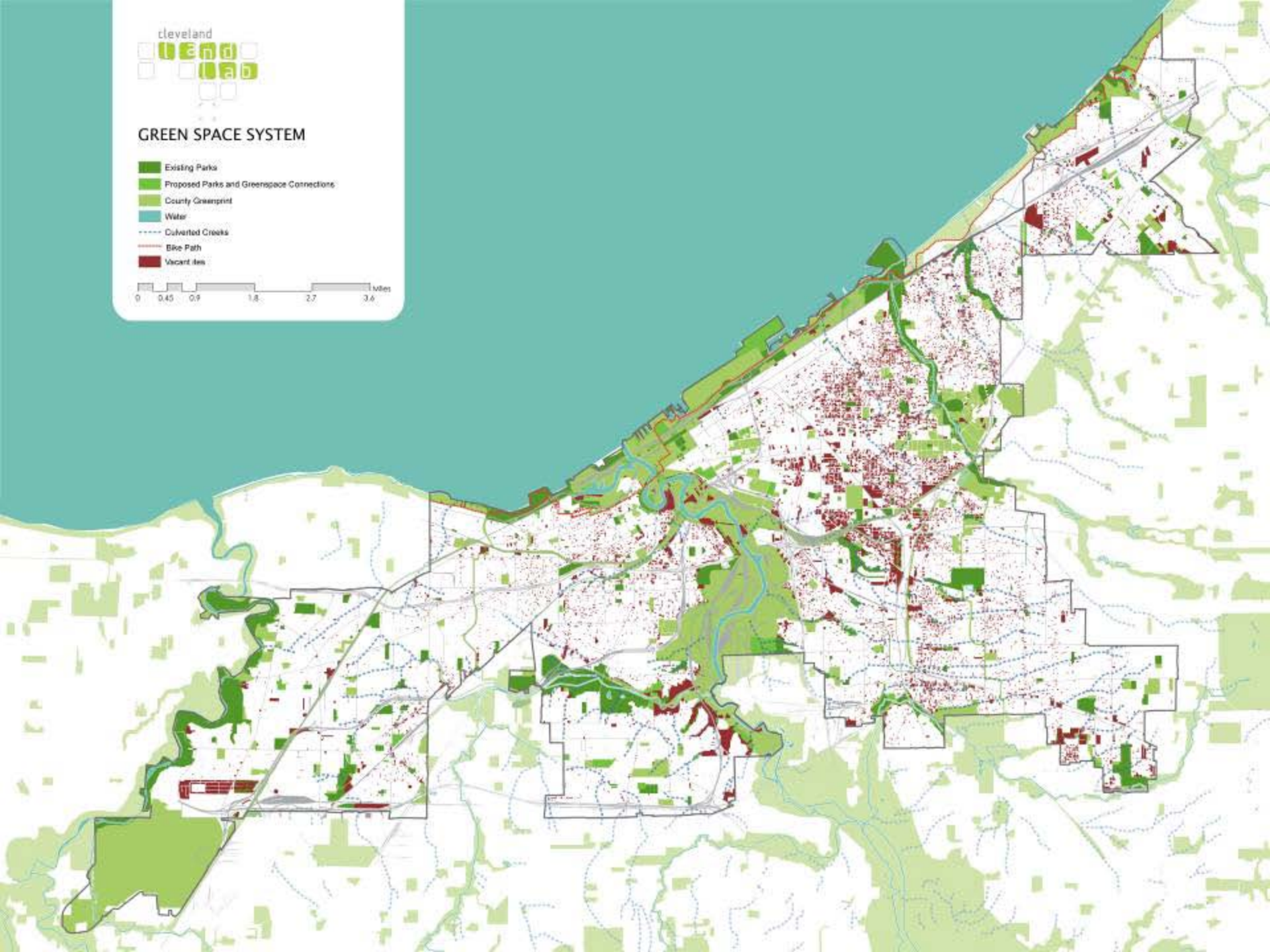
foreclosures





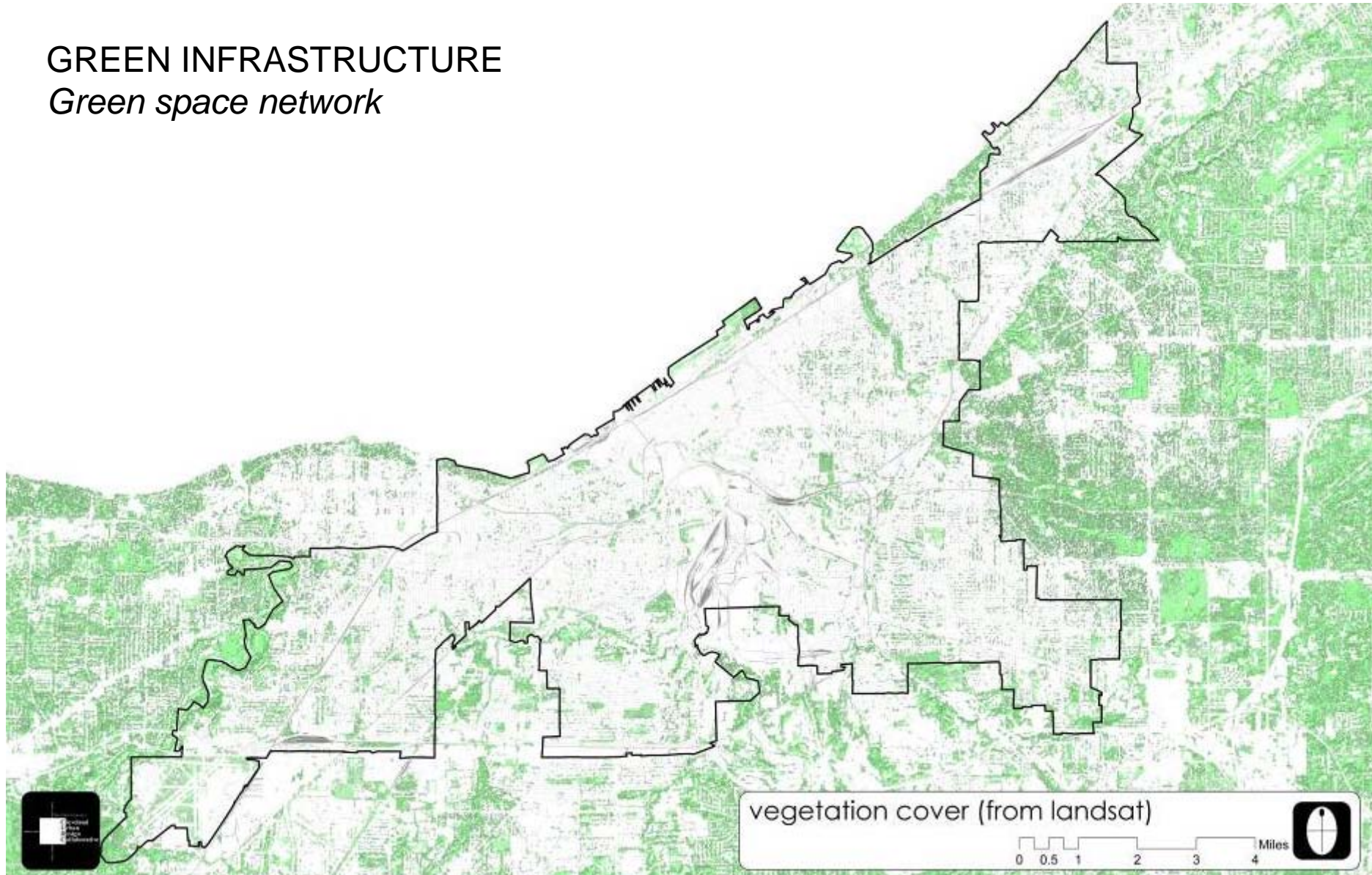
## GREEN SPACE SYSTEM

- Existing Parks
- Proposed Parks and Greenspace Connections
- County Greensprint
- Water
- Diverted Creeks
- Bike Path
- Vacant Sites



# GREEN INFRASTRUCTURE

*Green space network*

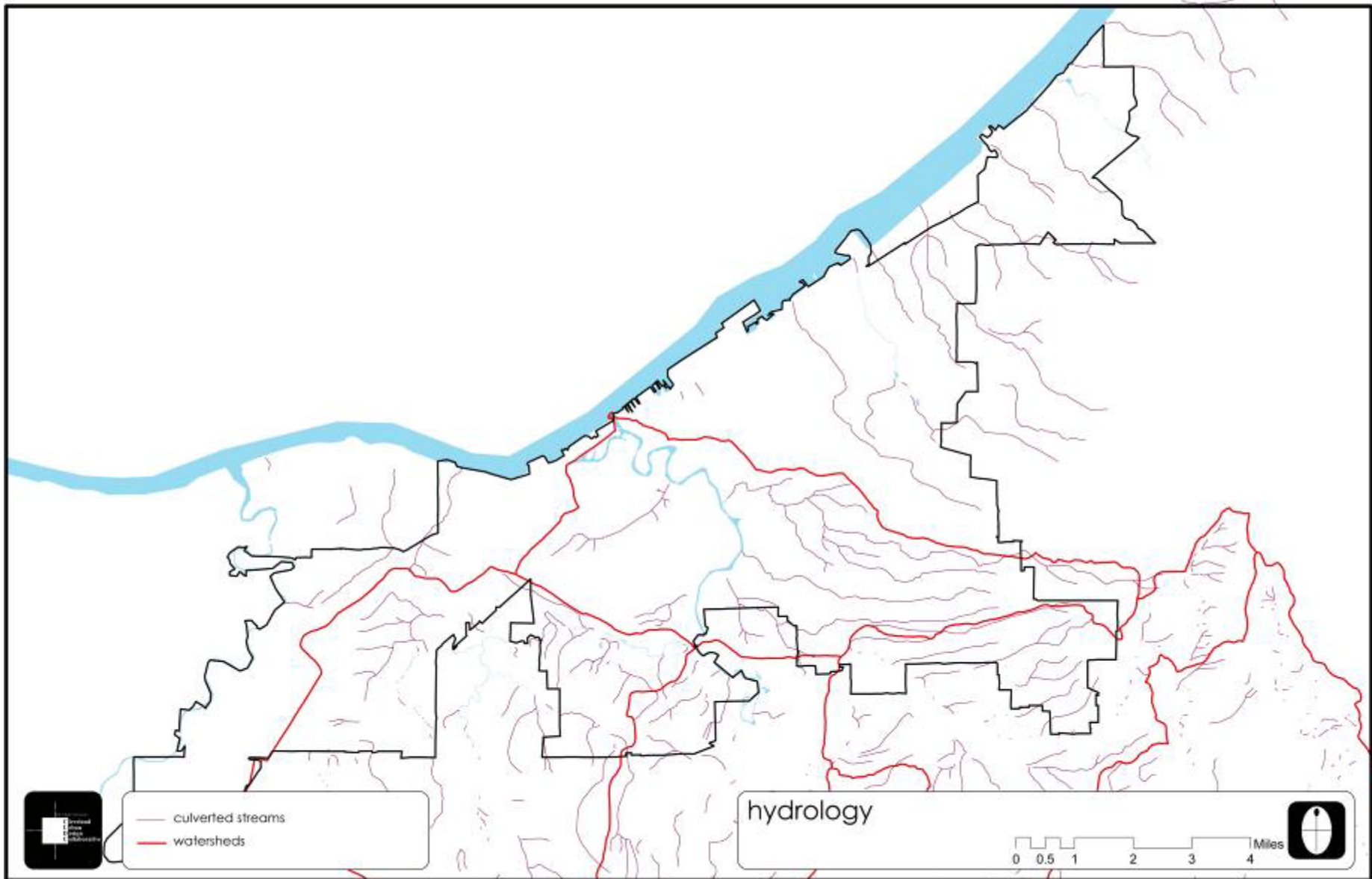


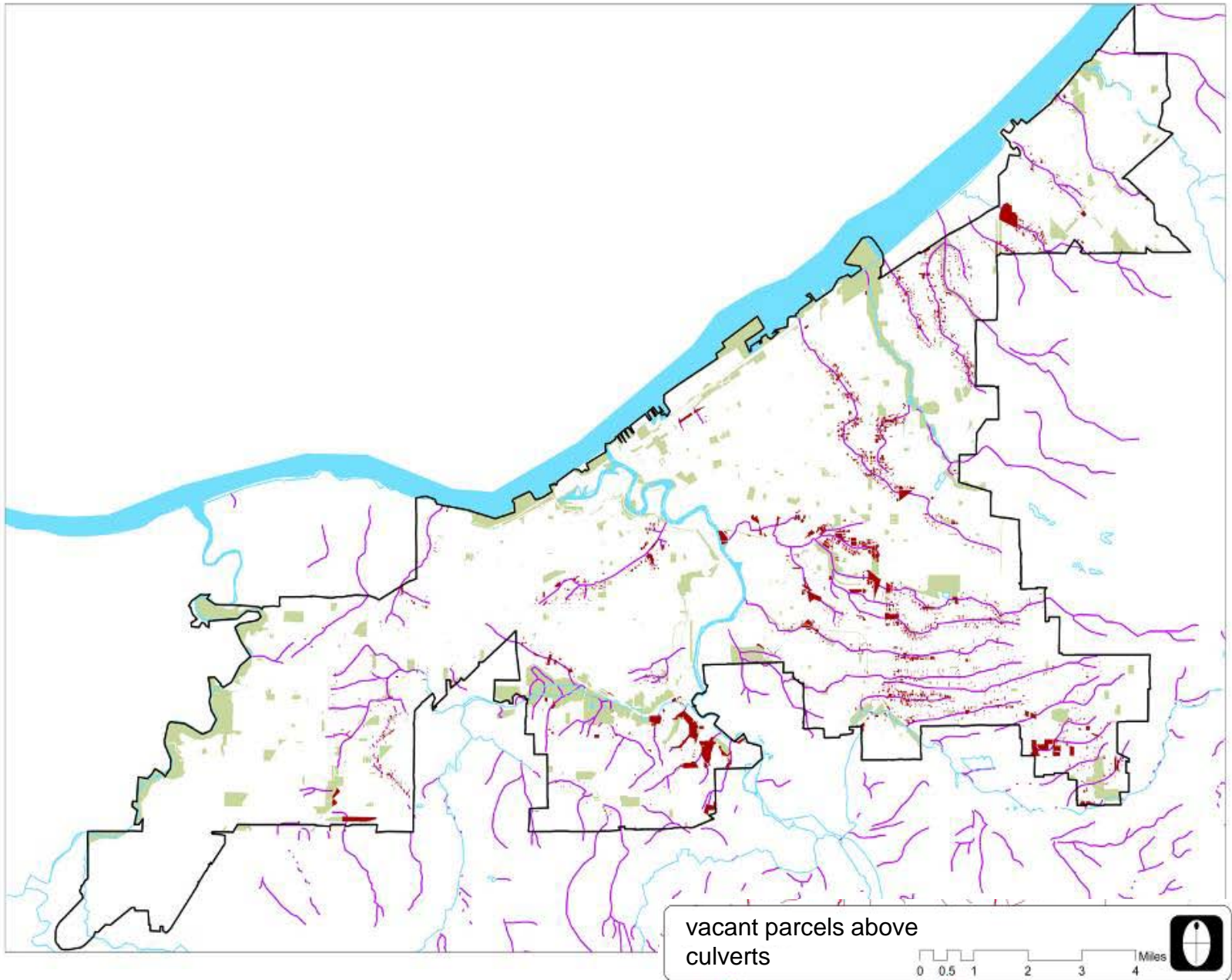


## HYDROLOGICAL SYSTEM

- Existing Parks & Green Connections
- Water
- Converted Creeks
- Roads
- Cleveland City Boundary
- Riparian Buffers
- Riparian Areas
- Headwaters
- Hydric Soils
- Hydrological Soils Groups A & B



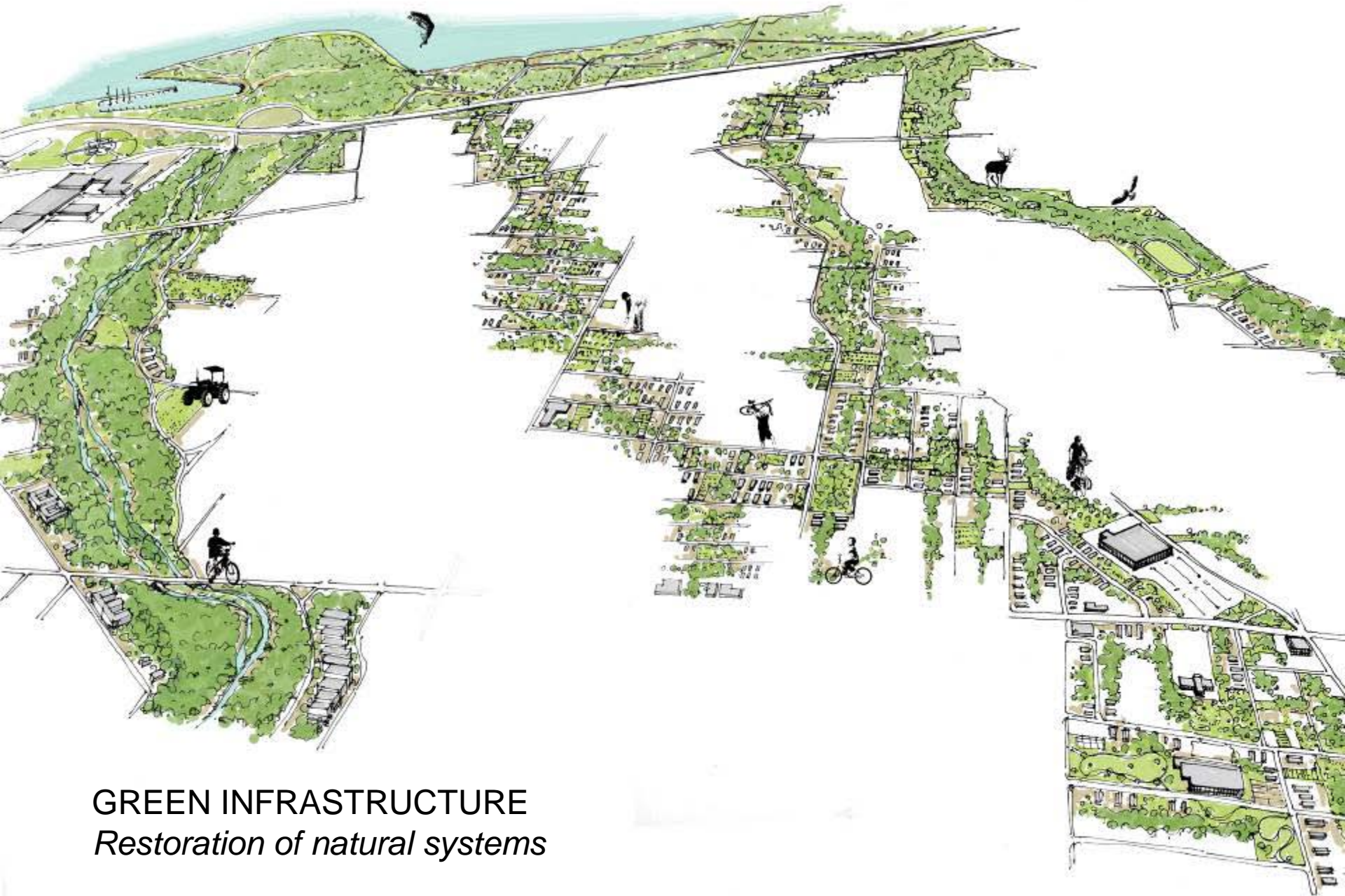








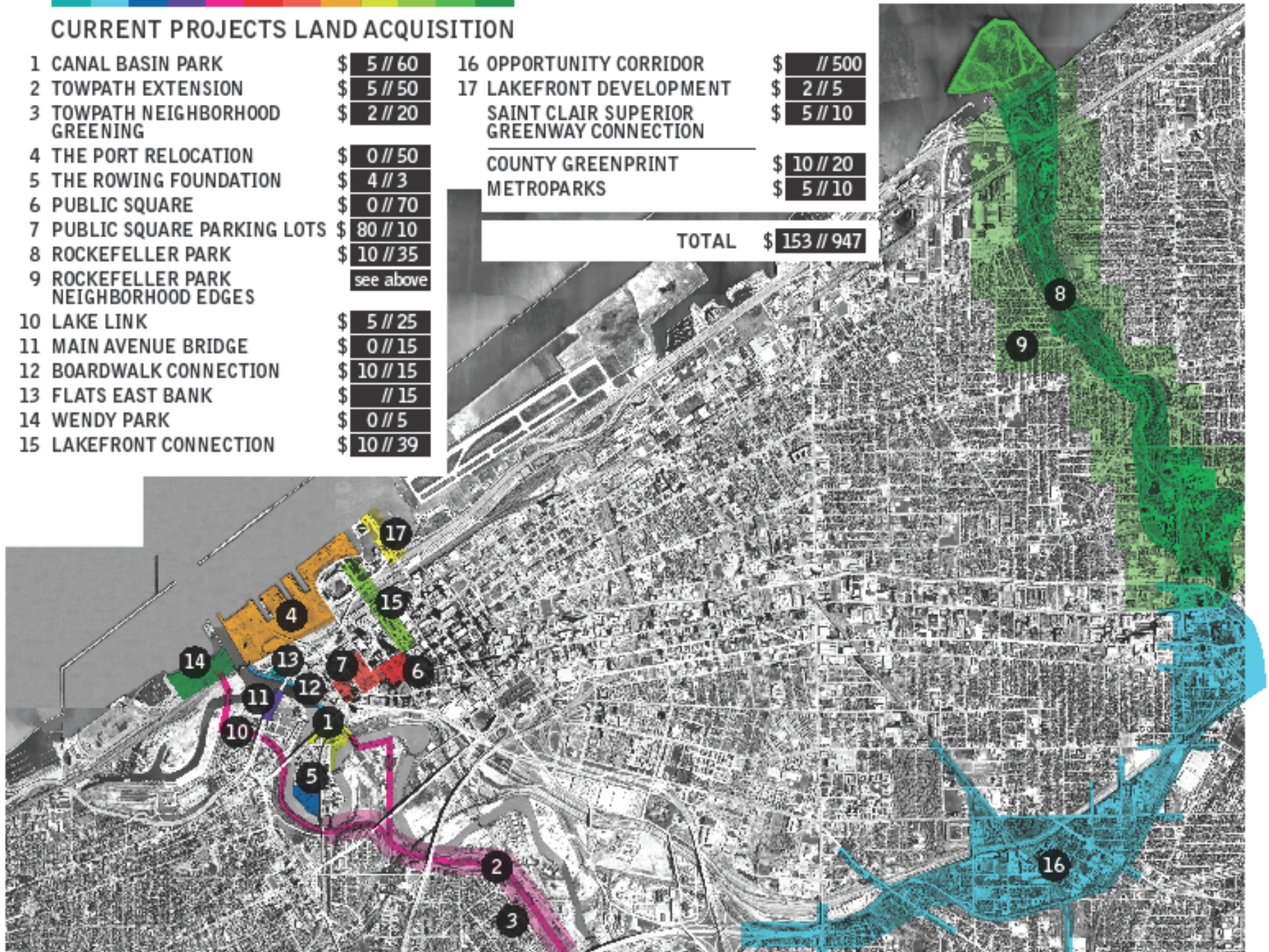
GREEN INFRASTRUCTURE  
*Neighborhood-scale riparian strategy*

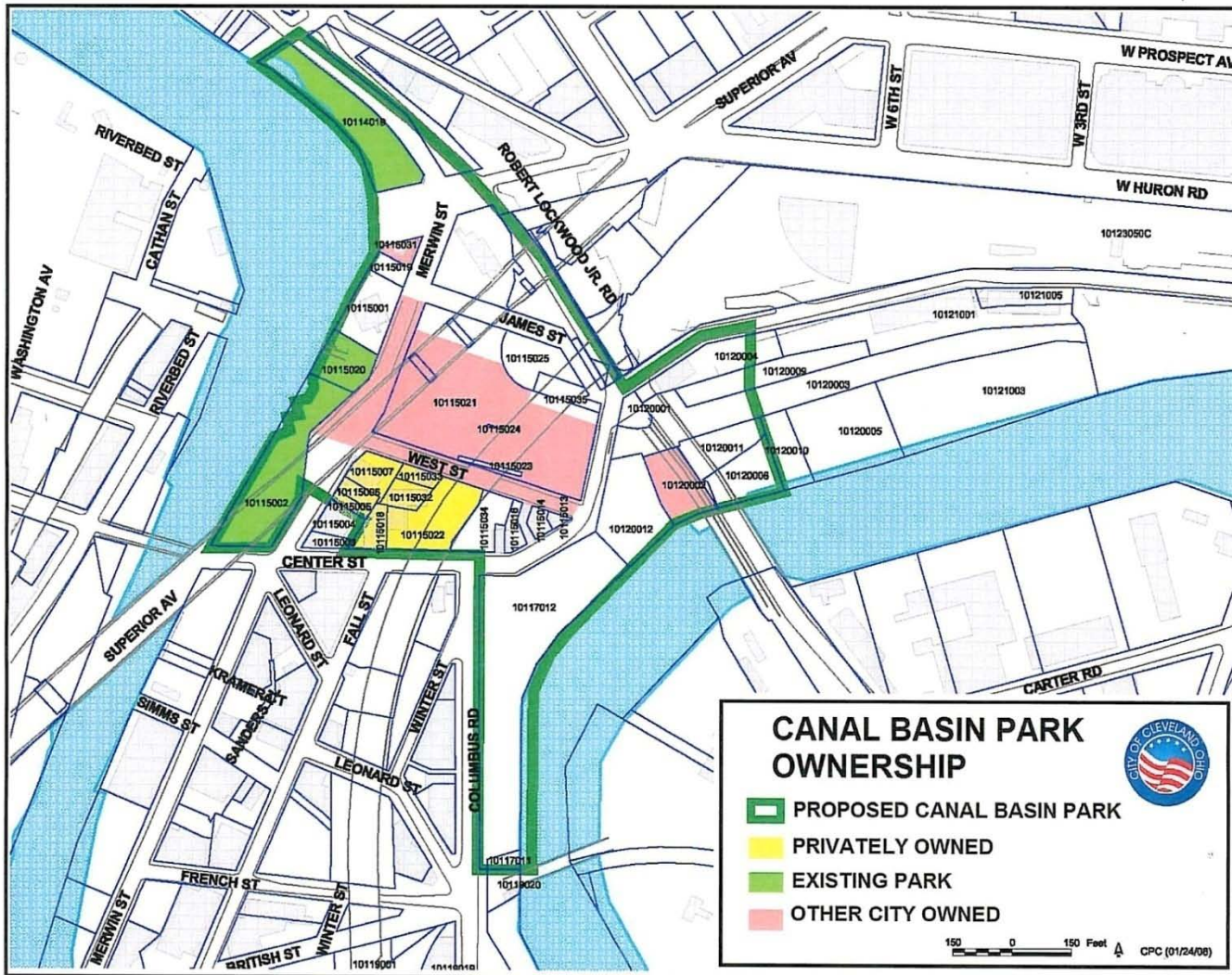


**GREEN INFRASTRUCTURE**  
*Restoration of natural systems*

## CURRENT PROJECTS LAND ACQUISITION

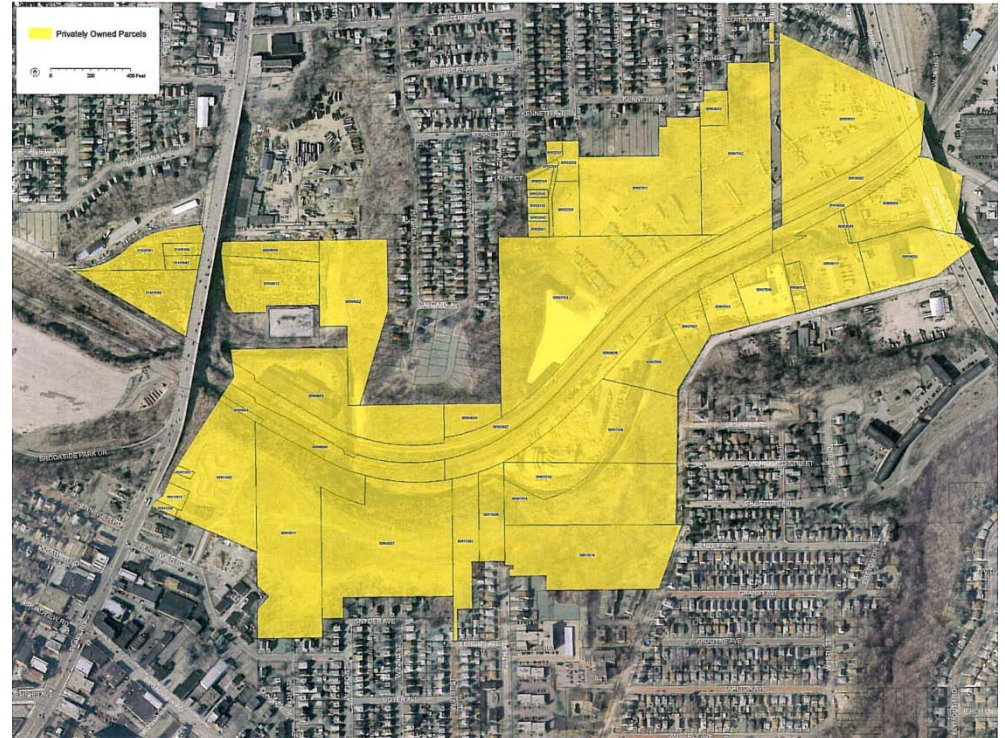
1 CANAL BASIN PARK	\$ 5 // 60	16 OPPORTUNITY CORRIDOR	\$ // 500
2 TOWPATH EXTENSION	\$ 5 // 50	17 LAKEFRONT DEVELOPMENT	\$ 2 // 5
3 TOWPATH NEIGHBORHOOD GREENING	\$ 2 // 20	SAINT CLAIR SUPERIOR GREENWAY CONNECTION	\$ 5 // 10
4 THE PORT RELOCATION	\$ 0 // 50	COUNTY GREENPRINT	\$ 10 // 20
5 THE ROWING FOUNDATION	\$ 4 // 3	METROPARKS	\$ 5 // 10
6 PUBLIC SQUARE	\$ 0 // 70		
7 PUBLIC SQUARE PARKING LOTS	\$ 80 // 10		
8 ROCKEFELLER PARK	\$ 10 // 35		
9 ROCKEFELLER PARK NEIGHBORHOOD EDGES	see above		
10 LAKE LINK	\$ 5 // 25		
11 MAIN AVENUE BRIDGE	\$ 0 // 15		
12 BOARDWALK CONNECTION	\$ 10 // 15		
13 FLATS EAST BANK	\$ // 15		
14 WENDY PARK	\$ 0 // 5		
15 LAKEFRONT CONNECTION	\$ 10 // 39		
		<b>TOTAL</b>	<b>\$ 153 // 947</b>





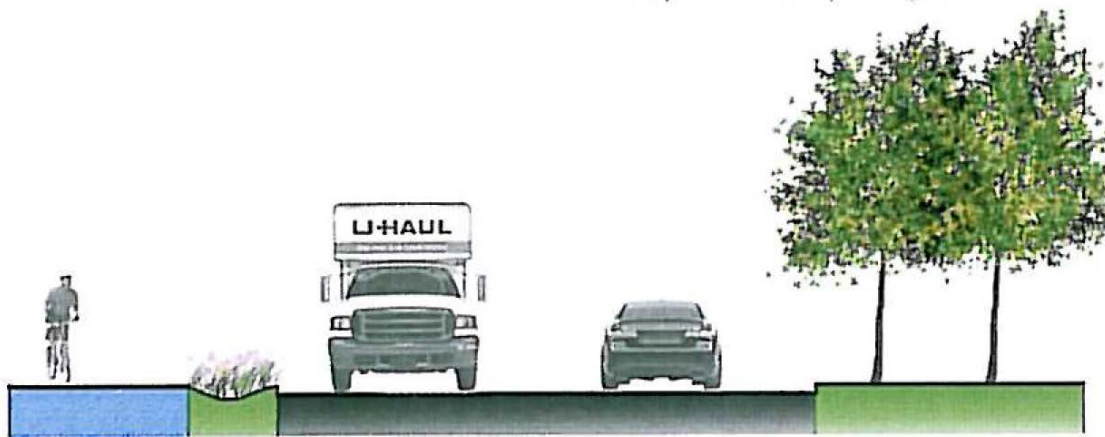
# Riverfront/Lakefront Parcels

- Canal Basin Park



# Riverfront/Lakefront Parcels

- Towpath Trail Extension



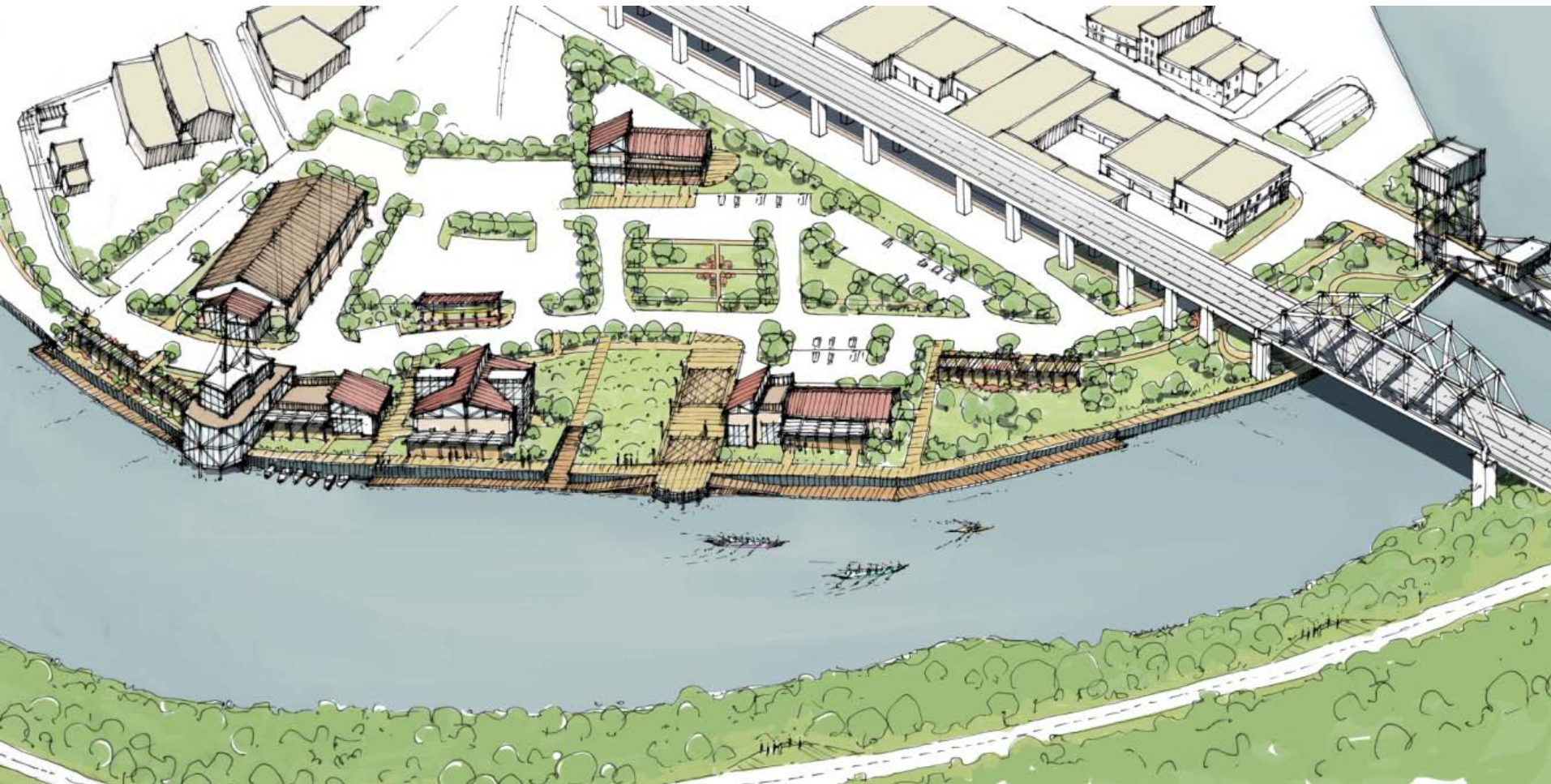
# Riverfront/Lakefront Parcels

- Towpath Trail – Neighborhood Greening (Train Avenue)



## Riverfront/Lakefront Parcels

- The Port Relocation

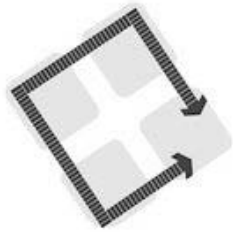


# Riverfront/Lakefront Parcels

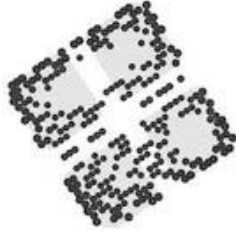
- The Cleveland Rowing Foundation relocation



HOW DO YOU MAKE ONE SQUARE  
OUT OF FOUR?



FRAME IT



FOREST IT



THREAD IT



## Riverfront/Lakefront Parcels

- Public Square Redesign



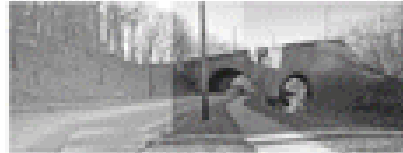
PROPOSED WEST PARK AVENUE BRIDGE RESTORATION



PROPOSED PEDESTRIAN BRIDGE CONCEPT AND BRIDGE CORRIDOR DEVELOPMENT TO FIBR WITH SPACES AND WALKWAY



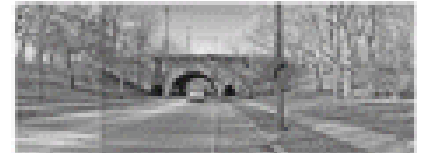
EXISTING WEST PARK AVENUE BRIDGE



EXISTING SUPERIOR AVENUE BRIDGE



EXISTING PARK OF THE BIRDS CONCEPT AND WALKWAY



EXISTING SAINT CLAIR AVENUE BRIDGE



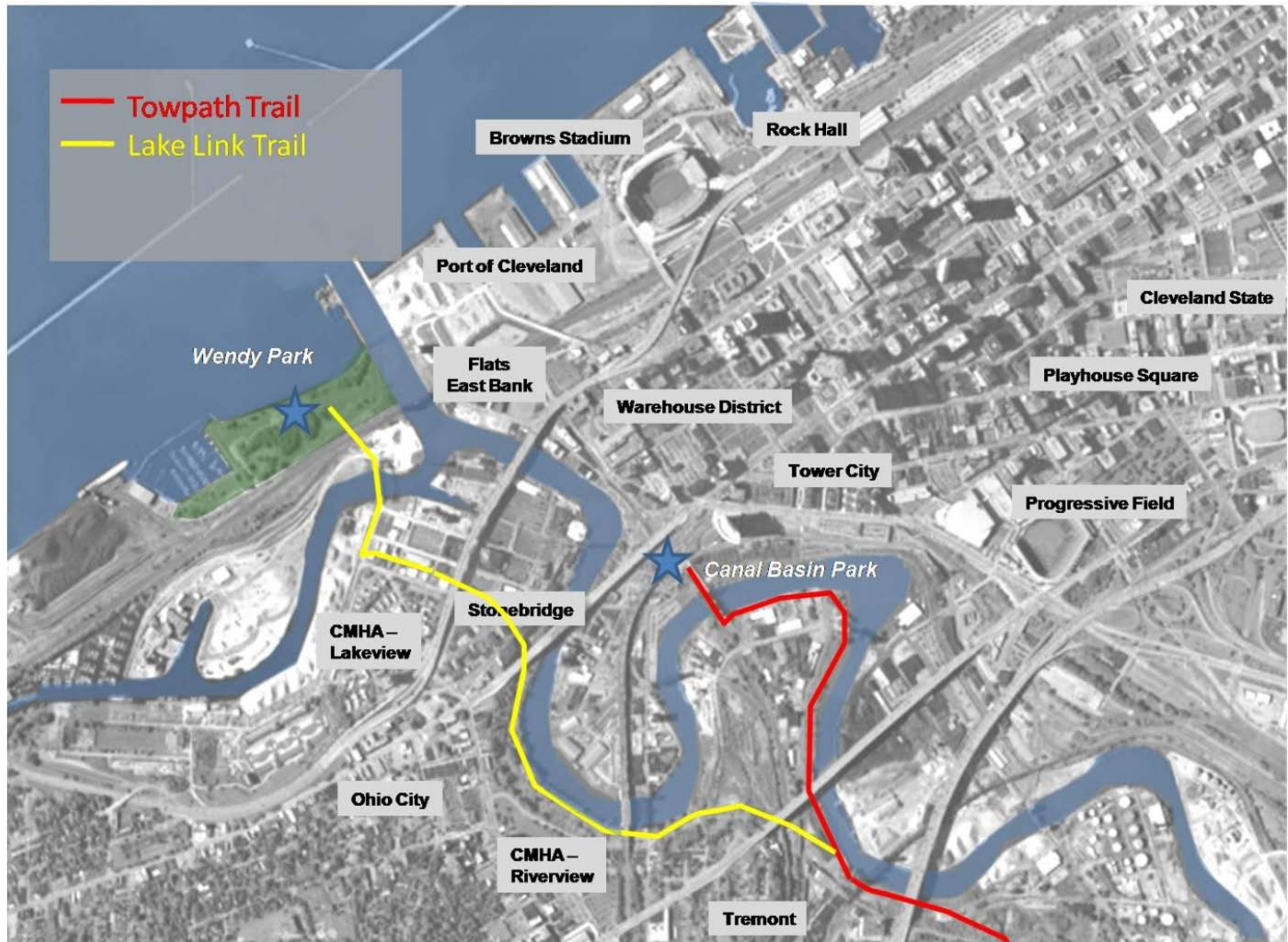
PROPOSED SUPERIOR AVENUE BRIDGE RESTORATION



PROPOSED SAINT CLAIR AVENUE BRIDGE RESTORATION

# Neighborhood Corridors/Greenways

- Rockefeller Park Strategic Plan



## Riverfront/Lakefront Parcels

- Lake Link Trail and Green Corridor/Bridge Connections



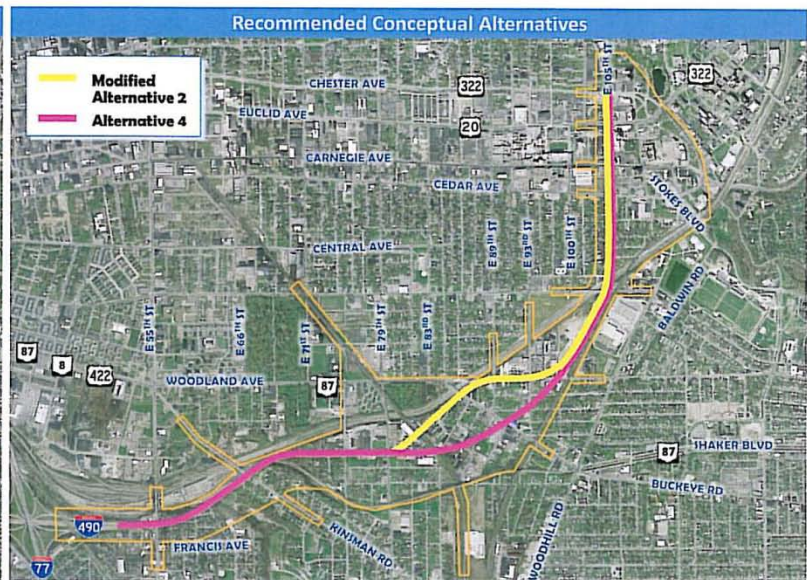
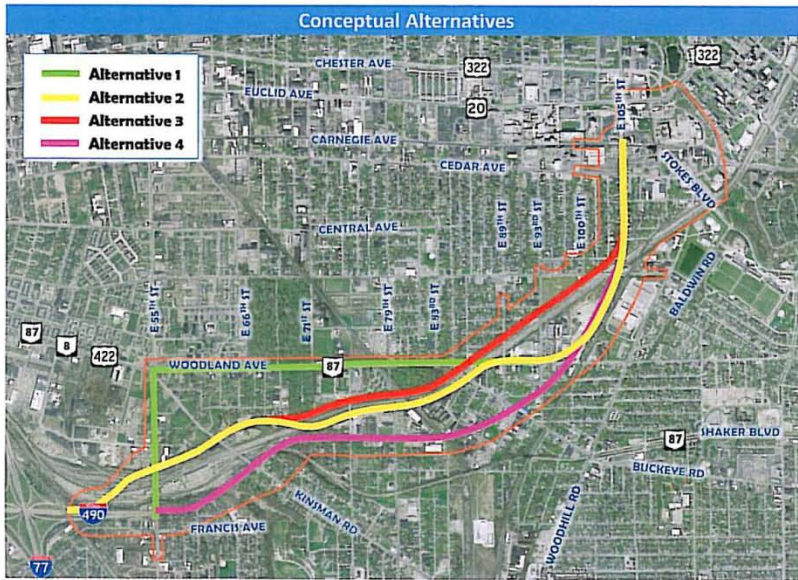
## Riverfront/Lakefront Parcels

- Flats East Bank, Boardwalk Connection



## Riverfront/Lakefront Parcels

- Wendy Park

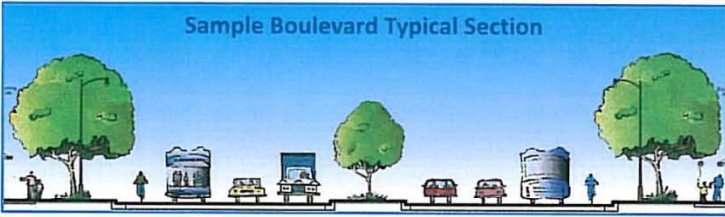


### Evaluation Matrix

Evaluation relative to other alternatives

Adverse ● ● ● ● Beneficial ● ● ● ●

● \*At-Grade Intersection at E. 55<sup>th</sup> Street  
● \*Grade separated intersection at E. 55<sup>th</sup> Street

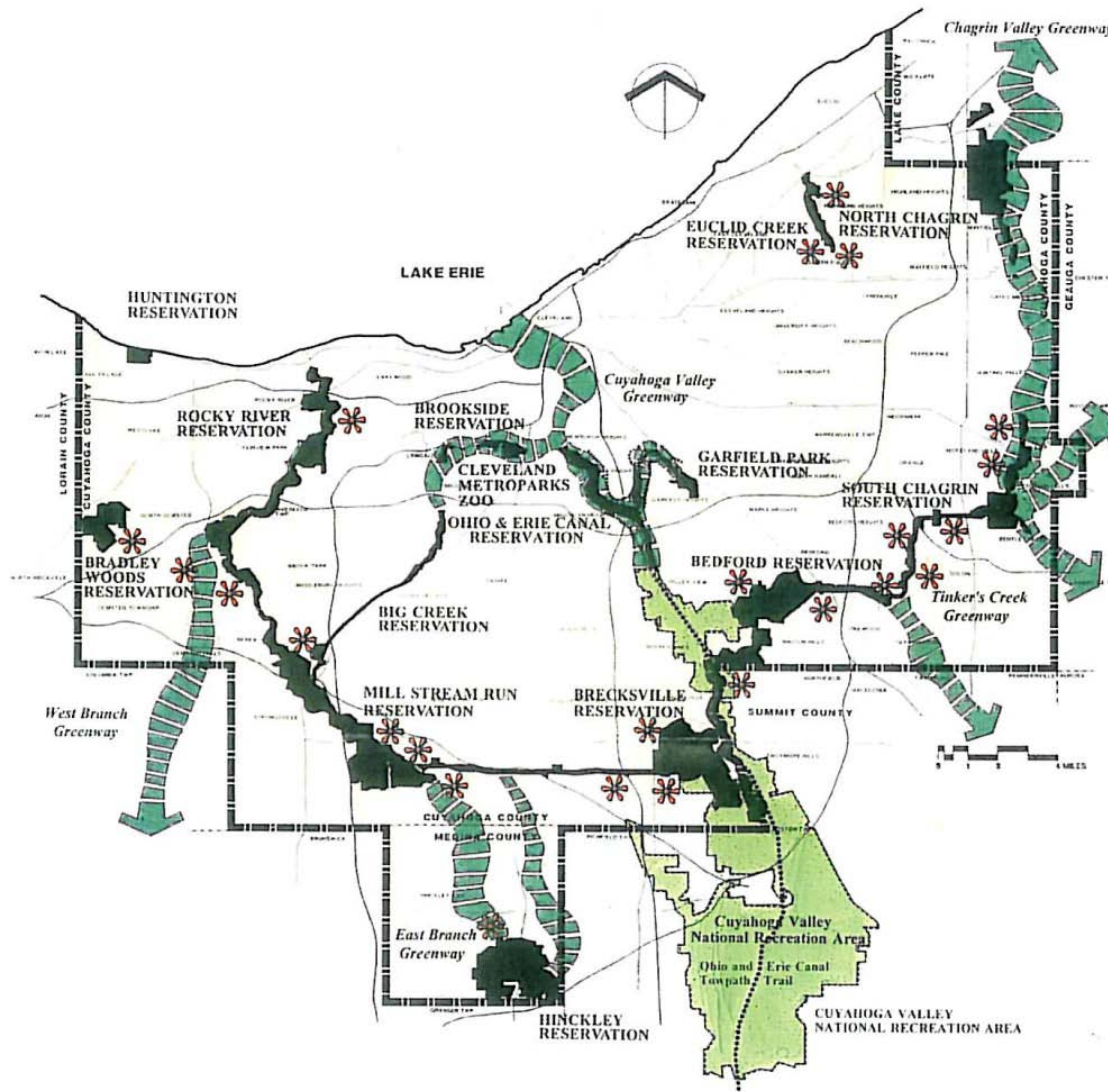


Alternative	Goals & Objectives			Impacts				Cost
	New Frontage	Adjacent Development	Access & Mobility	Environmental Impacts	Community Impacts	Residential Displacement	Commercial Displacement	
1	●	●	●	●	●	●	●	●
2	●	●	●	●	●	●	●	●
3	●	●	●	●	●	●	●	●
4	●	●	●	●	●	●*	●	●



# Neighborhood Corridors/Greenways

- Opportunity Corridor



# Neighborhood Corridors/Greenways

- Rockefeller Park Strategic Plan

<b>Project Name</b>	<b>Estimated Acquisition</b>	<b>Design/Construction</b>
Canal Basin Park	\$5 million	\$60 million
Towpath Extension	\$5 million	\$50 million
Towpath Neighborhood Greening	\$2 million	\$20 million
The Port Relocation	\$0	\$50 million
The Rowing Foundation	\$4 million	\$3 million
Public Square	\$0	\$70 million
Public Square Parking Lots	\$80 million	\$10 million
Rockefeller Park	\$10 million	\$35 million
Rockefeller Park Neighborhood Edges	(see above)	
Lake Link	\$5 million	\$25 million
Main Avenue Bridge	\$0	\$15 million
Boardwalk Connection (River Walk; East & West Bank)	\$10 million	\$15 million
Flats East Bank (green space)		\$15 million
Wendy Park	\$0	\$5 million
Lakefront Connections (Malls and Convention Center)	\$10 million	\$39 million



<b>Secondary Projects</b>	<b>Estimated Acquisition</b>	<b>Design/Construction</b>
Opportunity Corridor		\$500 million
Lakefront Development (East 9 <sup>th</sup> Street, Dock 32)	\$2 million	\$5 million
Saint Clair Superior Greenway Connection	\$5 million	\$10 million
County Greenprint	\$10 million	\$20 million
Metroparks	\$5 million	\$10 million
<b>TOTAL</b>	\$153 million	\$947 million

Sports: CSU falls just short of big upset over sixth-ranked West Virginia, 80-78
Sports: Holmgren turns down senior leadership position with Seahawks
Travel: Jesus Trail through northern Israel connects many faiths and cultures
Forum: Get involved and stay involved to ensure success of county reform
Up to \$897: What you can save with the coupons found inside today's Plain Dealer

# SUNDAY PLAIN DEALER

MORE THAN 1.5 MILLION READERS IN PRINT AND ON CLEVELAND.COM EACH WEEK | \$1.50 | \*\*\*\*



## THREE BOLD IDEAS FOR PUBLIC SQUARE



### FOREST IT

WHAT IF It? Proposal would create two large rectangular forest with trees native to Ohio, including maples and oaks. A large "sun lawn" clearing would be established on the northern redeveloping area for concerts. The southern portion would feature shade gardens, fountains and "renaissance gardens."

### THREAD IT

WHAT IF It? Proposal would erect a massive tall over intersection of Superior Avenue and Ontario Street, with four main tubes rising from the four quadrants of the square. Pedestrians could climb the hill, rising 70 feet above grade. It would be a natural attraction for anyone visiting the city. The hill would be a natural attraction for anyone visiting the city. The hill would be a natural attraction for anyone visiting the city.

### FRAME IT

WHAT IF It? Proposal would frame the square with a great lattice measuring 55 feet high and 40 feet thick. Vines would be trained on the sides of the lattice, creating a green wall. A large overture would have the lattice open when it reaches the Soldiers and Sailors Monument.



bold ideas for Public Square

## Man faces prison for e-mail attempt to spy on woman

She unknowingly put spyware on work computers
Peter Katsaris, Plain Dealer Reporter
If you ever had the urge to download one of those software programs that let you spy on someone else's computer, consider this the case of a fourth-grader in Ames Lake, Ohio. Early last year, Graham, a middle-schooler at University Street, started in Cleveland, wanted to sneak a peek at the online activity of a woman he believed was having an affair. So he set up an e-mail to her personal Yahoo account with an attachment that would install spyware on her laptop. The spyware, he had purchased on the Internet, was designed to capture a

## SUNDAY VOICES

REGINA BRETT
Have a stress-free little Christmas. Metro, B1
TERRY PLUTO
Cliff Lee trade doesn't look so bad now. Sports, C15
CONNIE SCHULTZ
Zelma Goegs' life is worth a peek. Forum, C1

## How a top architecture firm and some ambitious civic voices could reshape a Cleveland treasure

It was another afternoon in an overcast New England-style town in downtown Cleveland in a dead-end flanked by skyscrapers and filled by tree stumps. The main activity, as in Samuel Beckett's absurdist play about Godot, awaiting. But James Corner, one of the nation's leading landscape architects, has a huge potential to turn the 10-acre space at the heart of downtown into an iconic destination on par with Chicago's Millennium Park. It wants to see the square filled with people strolling, sunning, picnicking or relaxing; public art, concerts, gardens or outdoor markets. At the bottom of two nonprofit organizations, Parkworks and the Downtown Cleveland Alliance, Corner has come up with three radical and highly innovative plans for the square.



JAMES CORNER

# OPINION

TERENCE C. Z.
Senior Columnist
Editor
ELIZABETH
Editorial Page Editor
ROBERT M. LONG
Executive Page Editor

## A sea of debt

Congress, the president and the people must call a halt to Washington's dangerously free-spending ways

On a Christmas Eve, just after passing its health reform bill, the Senate approved a measure from the House of Representatives to raise the federal debt ceiling by approximately \$1.5 trillion. President Barack Obama quietly signed it last Monday. Not so long ago, as an increase that large might have kept the federal government's borrowing spending for a good while. No more. One of Congress' first chores this month will be to raise the cap another \$1.5 trillion or so, just to cover this year's deficit projections. To be fair, much of this year's deficit is both understandable and justifiable. As the nation emerges — we hope — from its worst recession since World War II, tax collections are down, demands for aid are up and Washington is trying to replace some private-sector demand on a day to day recovery. If the national debt were spiking simply because of a severe downturn, that would not be terribly troubling. Unfortunately, the recession came at the end of a decade when both parties and both ends of Pennsylvania Avenue gave up on fiscal discipline. When George W. Bush became president in 2001, the national debt was \$3.7 trillion — about 30 percent of national output — and the

## Campus District has potential

I t has been nearly three decades since leaders of Cleveland State University, Cuyahoga Community College and St. Vincent Charity Hospital and Health Center started working together on safety and other common concerns in an area they called the Quadrangle. In the 1990s, at the urging of City Hall, the group expanded its boundaries north to the intersection to encompass light industrial areas and Cleveland's emerging Alakoon Center. There is the inner Belt project. Planners for the Ohio Department of Transportation envision that 23rd Street as a key exit for traffic that is headed both into downtown and east to West County Clinic. Campus District organizers say CDDT could do two things to help transform their neighborhood. First, turn East 23rd into a well-landscaped boulevard from the main Post Office to Superior Avenue. Both a north-south artery — with ample room for bicycles and pedestrians



## Napolitano flavors the administration

DAVID S. BROOKER
I dashed back to the first time I met her. A good friend from the staff of the late Rep. Mark E. Miller '08 had just moved to Washington, the secretary of homeland security, and I had. After a passage on a Northwest Airlines flight from Amsterdam ignited a cancelled fare as the plane approached Detroit, she landed, apparently intending to get up and kill me about it. It came as an surprise to anyone who knew her that Napolitano had landed the incident and its aftermath with aplomb. In the years I have known her, she has managed every challenge that has come her way with the same calm command that she showed in this incident. If there is anyone in the administration who understands the importance of quiet competence, it is her. As the director of the Federal Bureau of Investigation, she was more important in the chain of command than the position of chief of police that she held at that time. The Obama Cabinet is filled with talents, but many of the stars are of an age or temperament unlikely to turn them into more than excellent. Napolitano will face many subjective and not just in dealing with her own role in managing the transition — her first job as a candidate for anyone but her potential as a cabinet member. She soon became one of my favorites to pick to follow her. I was her ally at the renaissance of the National Governors' Association, where she was

Alice: How do you feel about the new administration?



## U.S. strike force secretary an expert at keeping secrets

Courthouse legend is retiring after 28 years
MARA PERRY
Plain Dealer Reporter
Dorrie Flanagan lives a household name in Cleveland, but she knows the secret courts about the most high-profile crimes and investigations of the city's courts are done," she said, "I've worked with some of the best legal minds in the U.S. state bar." The lead secretary of the U.S. state bar on Jan. 4, she said, "I've worked with some of the greatest legal minds and investigators in the U.S. state bar." — J. PINNEGAN | A17